



# **Installation Guide OPOS Driver**

---

**Rev. 2.15**

## **■ Table of Contents**

<b>1. Instruction .....</b>	<b>3</b>
<b>2. Development Precondition .....</b>	<b>4</b>
2-1 Features .....	4
2-2 Operating Environment.....	4
2-3 Accessible Devices .....	5
<b>3. Installation .....</b>	<b>6</b>
3-1 Installation.....	6
3-2 Uninstallation .....	8
<b>4. Warning.....</b>	<b>8</b>

## **1. Instruction**

This is a manual about how to use BIXOLON OPOS DRIVER program, installation, BIXOLON OPOS DRIVER setup, and making application using BIXOLON OPOS DRIVER.

BIXOLON OPOS DRIVER Setup contains software with API functions that can be used easily through OLE controls supported by Visual Basic and Visual C++ on a computer running Windows XP/2003/Vista/2008 Server/Windows 7/Windows 8 platforms.

Throughout this manual, “OLE for Retail POS” is called “OPOS”.

Throughout this manual, “Unified for Retail POS” is called “UPOS”.

Further Source

OLE for Retail POS committee available from <http://monroeecs.com/opos.htm>

Driver Update from <http://www.bixolon.com>

We at BIXOLON maintain ongoing efforts to enhance and upgrade the functions and quality of all our products. In following, product specifications and/or user manual content may be changed without prior notice.

## **2. Development Precondition**

### **2-1 Features**

Through these standardized API functions, you can develop powerful, open POS systems easily.

### **2-2 Operating Environment**

Hardware	IBM PC/AT or Compatible
Operating System	Windows XP / Windows Server 2003 Windows Vista / Windows Server 2008 Windows 7 / Windows 8
Hdd	Recommend 10M bytes free
Memory	Recommend 32M bytes over
Serial Ports	COM1, COM2, COM3 ... COM50
Parallel Ports	LPT1, LPT2, LPT3, LPT4
USB ports	Windows XP / Windows Server 2003 Windows Vista / Windows Server 2008 Windows 7 / Windows 8
Supported Languages	Microsoft Visual Basic Version 6.0 Microsoft Visual C++ Version 6.0 Power Builder / Delphi / etc..

**2-3 Accessible Devices****POSPrinter**

Model	Serial	Parallel	USB	Ethernet	Bluetooth	Wireless LAN
STP-103	O	O	X	X	X	X
STP-103II	O	O	O	X	X	X
STP-131	O	O	X	X	X	X
SRP-270	O	O	O	O	X	X
SRP-275	O	O	O	O	X	X
SRP-275II	O	O	O	O	X	X
SRP-280	O	O	O	O	X	X
SRP-330	O	O	O	O	X	X
SRP-340	O	O	O	O	X	X
SRP-350	O	O	O	O	X	X
SRP-350N	O	O	O	O	X	X
SRP-350II	O	O	O	O	X	X
SRP-350IIIBE	X	X	O	O	O	X
SRP-350III	O	O	O	O	X	X
SRP-352III	O	O	O	O	X	X
SRP-350IIK	O	O	O	O	X	X
SRP-350plus	O	O	O	O	X	X
SRP-350plusF	O	X	X	X	X	X
SRP-352plus	O	O	O	O	X	X
SRP-350plusII	O	O	O	O	X	X
SRP-352plusII	O	O	O	O	X	X
SRP-350plusIII	O	O	O	O	O	O
SRP-352plusIII	O	O	O	O	O	O
SRP-370	O	O	O	O	X	X
SRP-372	O	O	O	O	X	X
SRP-500	O	O	O	O	X	X
SRP-F310	O	O	O	O	X	O
SRP-F312	O	O	O	O	X	O
SPP-R200	O	X	O	X	O	X
SPP-R200II	O	X	O	O	O	O
SPP-R300	O	X	O	O	O	O
SPP-R400	O	X	O	O	O	O

**LineDisplay**

Model	Serial	PARALLEL	USB
BCD-1000	O	X	X
BCD-1100	X	X	O

\* BCD-1100 is supported USB Interface, but it is connected in Virtual COM through the USB.

**MSR**

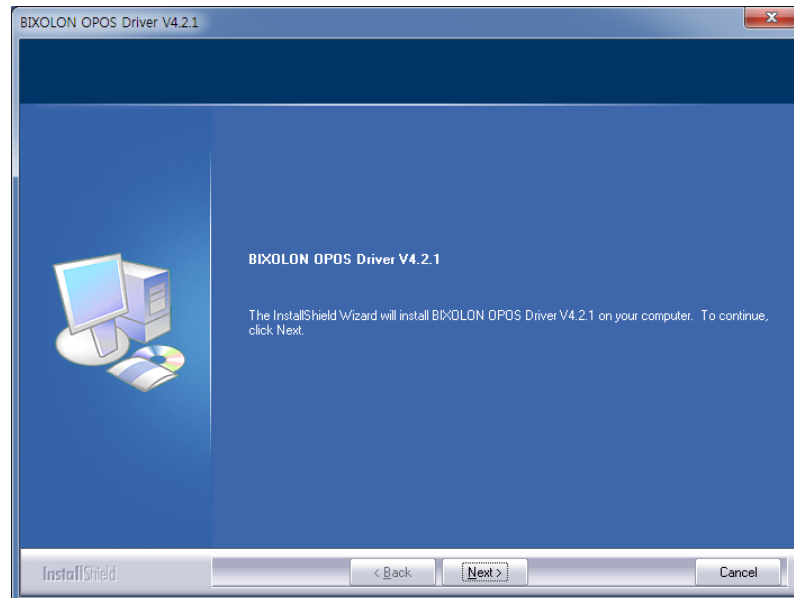
Model	Serial	Parallel	USB	Ethernet	Bluetooth	Wireless LAN
SPP-R200_MSR	O	X	O	X	O	X
SPP-R200II_MSR	O	X	O	O	O	O
SPP-R300_MSR	O	X	O	O	O	O
SPP-R400_MSR	O	X	O	O	O	O

### 3. Installation

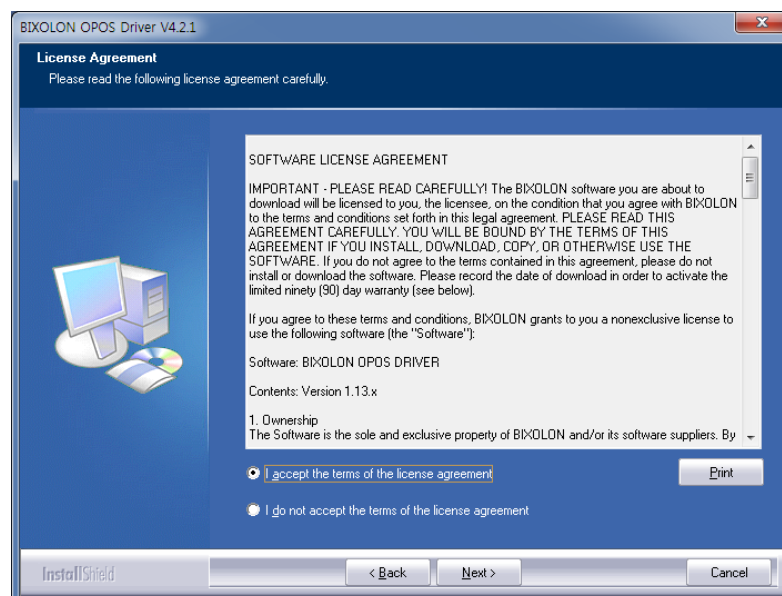
BIXOLON OPOS DRIVER Installer is included pure OPOS Drivers (Control Object, Service Object) and 'OPOS Setup Utility' Program. But this manual, sample source are not included the installer. There are exist another folder.

#### 3-1 Installation

- 1) Run "BIXOLON OPOS Driver Vx.x.x.exe"(e.g. V4.2.1)
- 2) "Welcome" dialog displayed



- 3) "Start Copying Files" dialog is displayed.

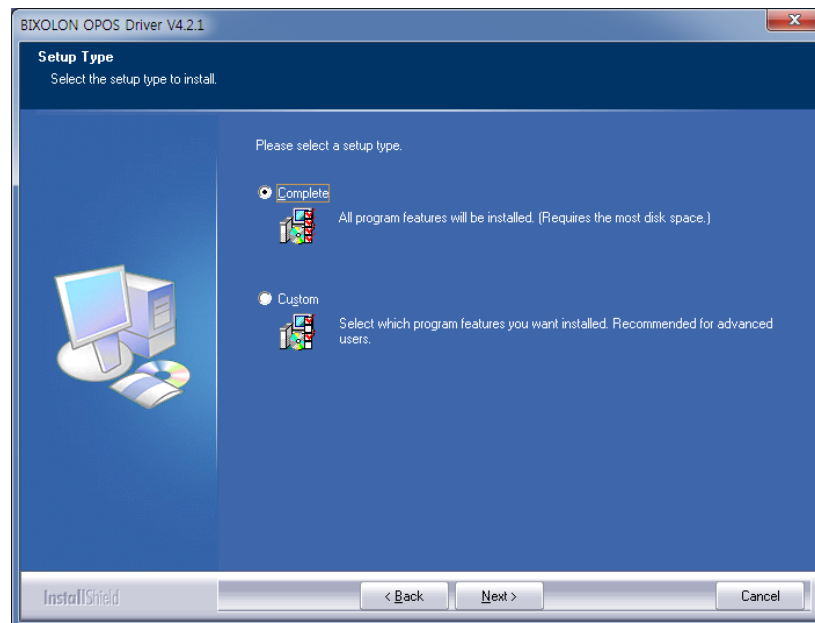


4) "Install Type" dialog is displayed.

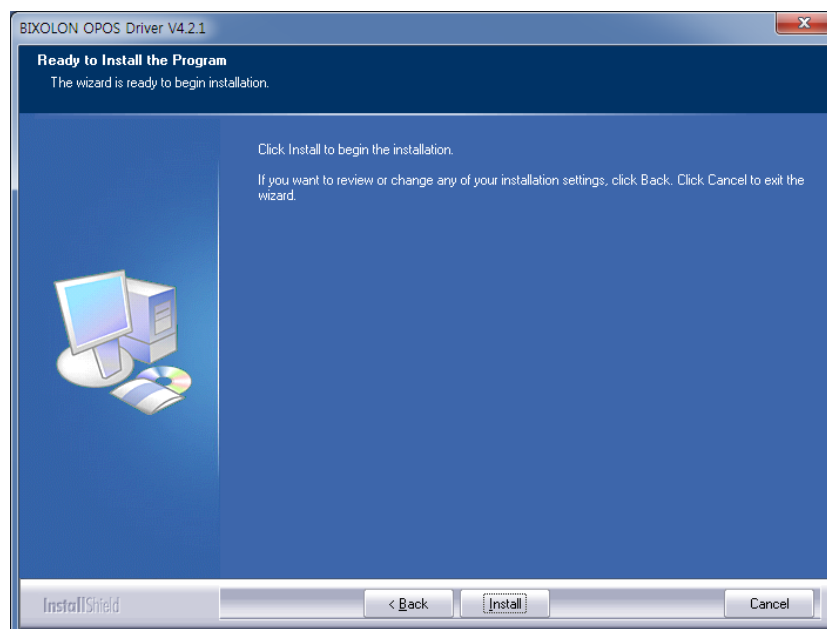
"Choose Installation Destination" dialog box is displayed.

The default directory is

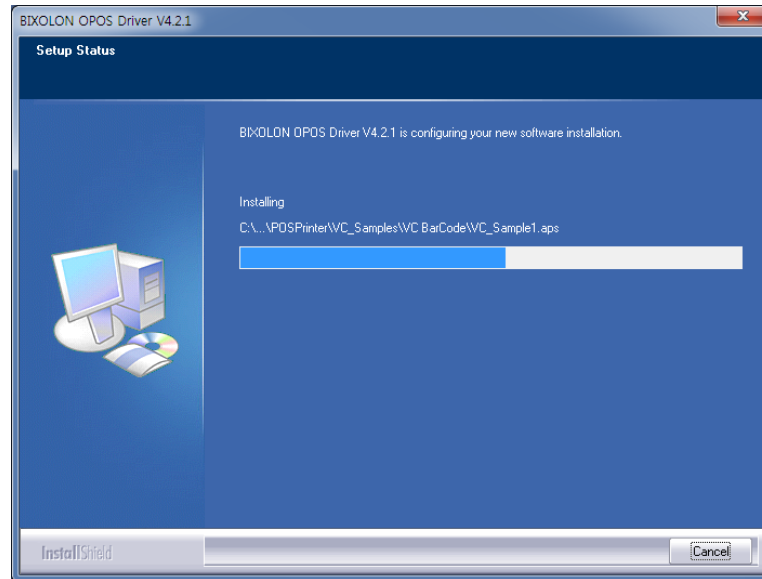
"C:\Program Files\OPOS\BIXOLON OPOS DRIVER\"



5) Ready to Install



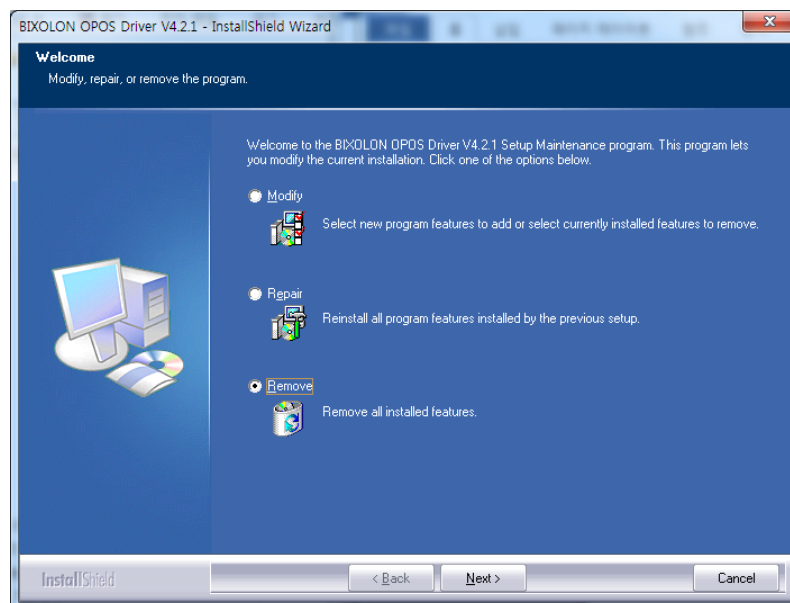
### 6) Copy Operation



7) When all copy operations are completed “Readme.txt” File Contents is displayed

### 3-2 Uninstallation

To remove or modify BIXOLON OPOS DRIVER, Select ‘BIXOLON OPOS DRIVER’ from Add / Remove Programs in Control Panel and remove or modify.



## 4. Warning

- 1) BIXOLON OPOS Driver not work properly.  
If you use the OPOS driver of other manufacturers.
- 2) BIXOLON doesn't guarantee proper operation with the POS devices of other manufacturers.